

Mini Type CL25 Connector Cleaner

CL-25-M & CL-125-M

Mini type is the new member of C-25 series. Besides of easy operation, good cleaning affection, lost cost and convenience to carry, it can be used in the narrow place, such as optical modem and optical transceiver.

Features

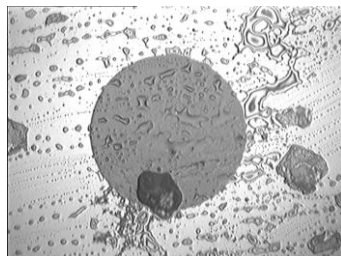
- ◆ Cleaning the dust and oil on different kinds of male and female connectors
- ◆ Can be used in narrow place
- ◆ Easy pushing motion without secondary pollution
- ◆ Made from anti static resin
- ◆ Disposable with 800+ cleanings per unit
- ◆ Dimensions: 110*30*18mm;
- ◆ Weight: 35g



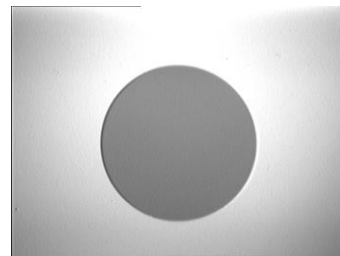
Application

- Optical transceiver module port
- TOSRA end face
- Yin-yang optical attenuator end face
- Patch panel port
- Optical Transmitter and receiver port

Performance



Before



After

Necessity of cleaning

For high-speed optical transfer and WDM, there is more and more energy of over 1W output power from laser LD. How is it going if there exists pollution and dust on the end face.

- Fiber may fuse because of pollution and dust heating. (In foreign countries, it is limited that the fiber connectors and adapters should suffer over 75 °C).
- It can cause damage to the laser equipment and influence the communication system because of light reflex (OTDR is very sensitive).

Effect of dust heating by high-energy laser:

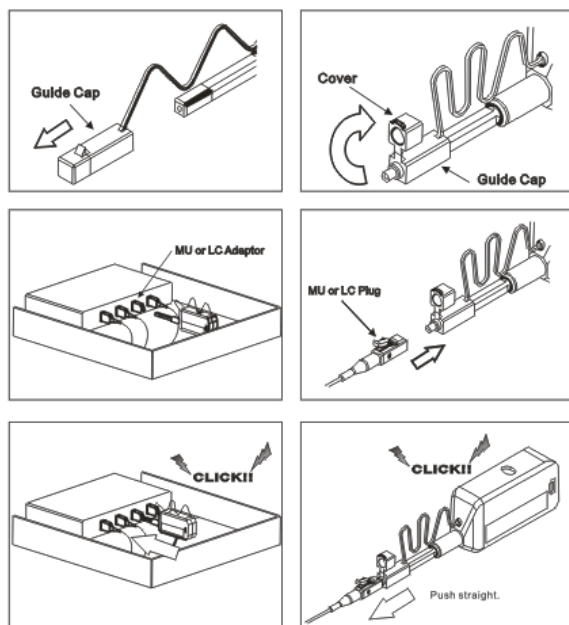
- Burn the fiber stub
- Fuse the surrounding of fiber stub
- Melt the surrounding metal powder of fiber stub

Comparison

Tools	Optic fiber stick and Electronic optic fiber cleaner	Non-woven fabrics (Clothes or towel) and cotton Ball rod	High pressure gas
Reasons of undesired effects	<ol style="list-style-type: none"> Though it is good at the first cleaning, there is secondary pollution after repeated use. (Secondary pollution is avoided by our CLEP because the cleaning part will be updated after use) High cost 	<ol style="list-style-type: none"> It is not suitable for the final cleaning because of the depilation. It may cause of failure. The Metal powder and dust will cause damage to the fiber end face 	<ol style="list-style-type: none"> It is good for the floating dust at a non-contact method. However there is little effect to the backlog dust. There is little effect to the oil

Application

LC/MU Application



FC/SC/ST Application

